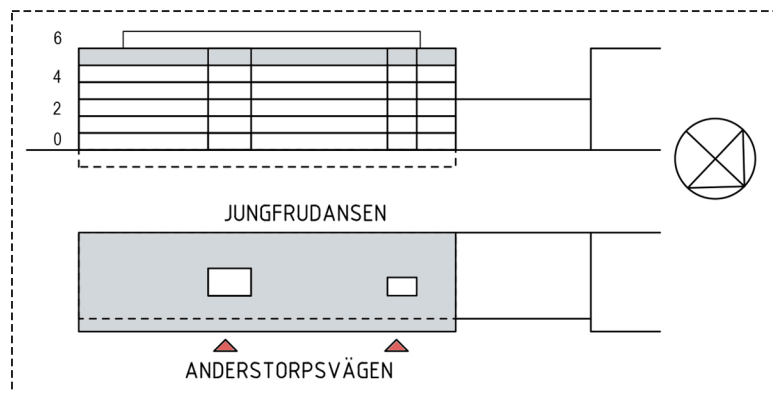
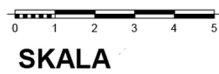


Kv. Gräslöken  
 Anderstorpsvägen 20-22, Solna  
 Plan 5  
 Ca 1170 kvm, Kontor



**80-110 arbetsplatser**

|                  |   |
|------------------|---|
| Mötesrum (8-10P) | 1 |
| Lounge           | 2 |
| Pentry/Paus      | 2 |

|               |   |
|---------------|---|
| Förråd/Server | 3 |
| Kop/Teknik    | 2 |
| WC            | 5 |
| HWC           | 2 |
| Städ          | 1 |

